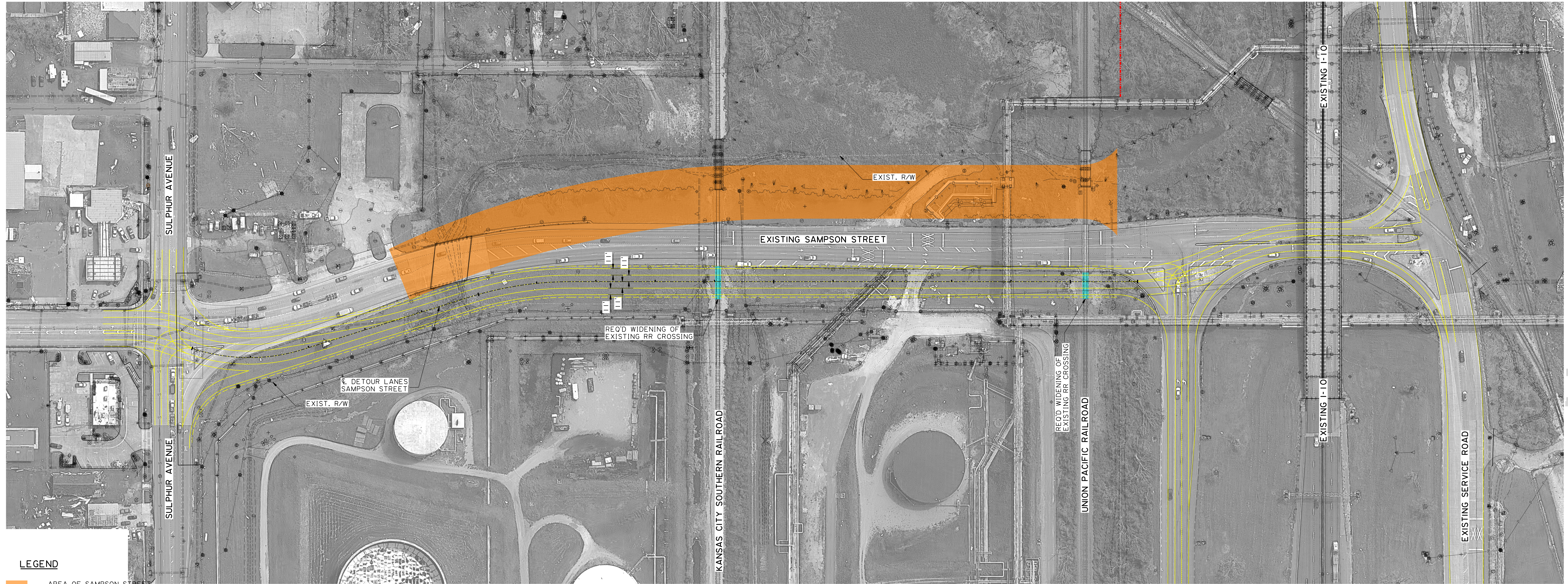
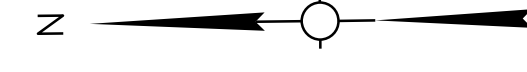


KEY DATES



**LEGEND**

- AREA OF SAMPSON STREET BRIDGE CONSTRUCTION
- PROPOSED TEMPORARY DETOUR LAYOUT
- REQUIRED AT GRADE RR CROSSING WIDENING
- REQ'D R/W
- EXISTING R/W

I-10 CALCASIEU RIVER BRIDGE  
PUBLIC-PRIVATE PARTNERSHIP  
S.P. NO. H.003931  
CALCASIEU PARISH

SAMPSON STREET  
PROPOSED TRAFFIC SHIFT

